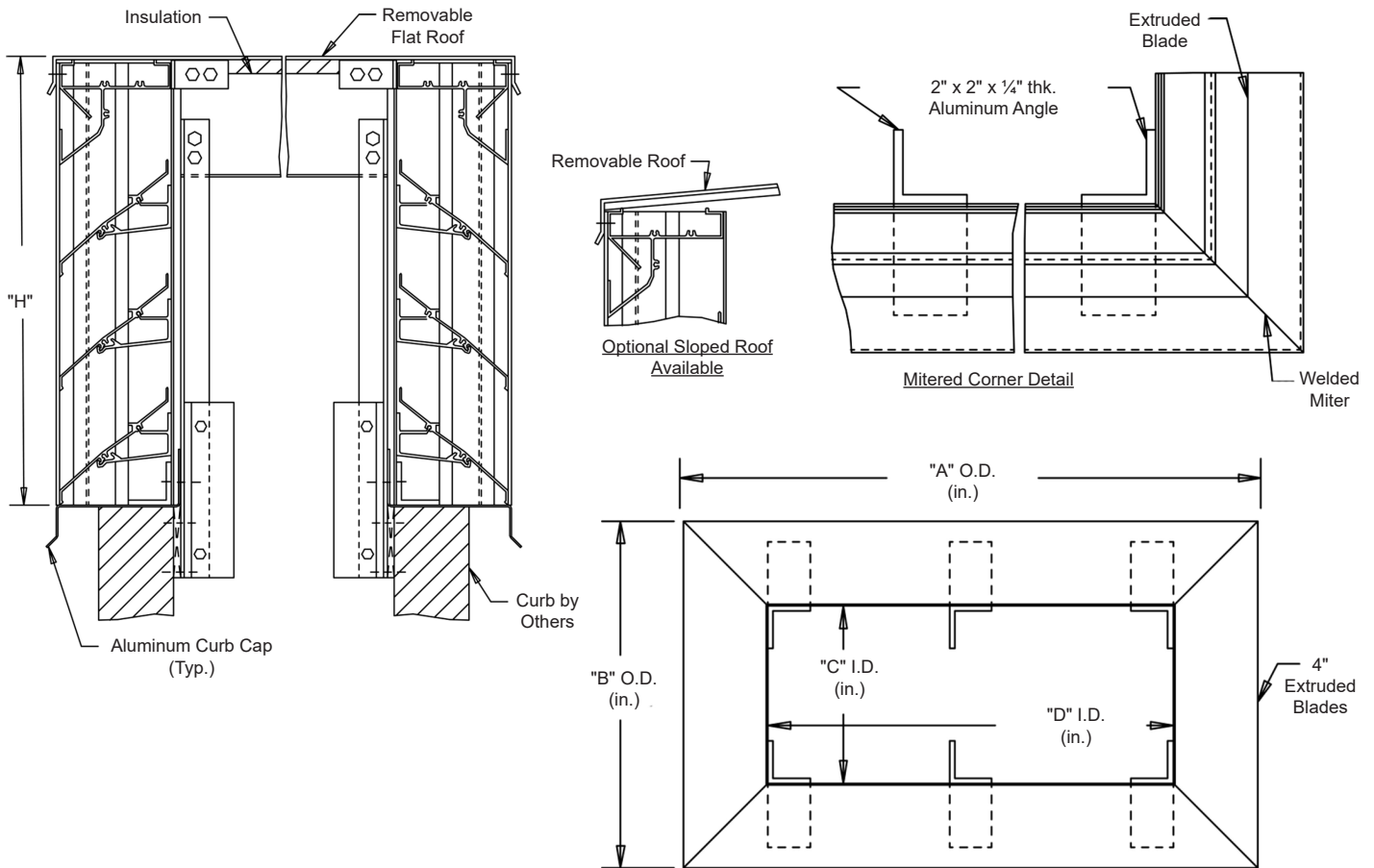


Interior Fastening Installation

ANGLES - All corners and intermediate to extend from roof into curb.



Continuous angle at the four corners and intermediate as required.

STANDARD MATERIALS AND CONSTRUCTION


MATERIAL: .081" thick (nominal) or .125" thick (nominal) extruded aluminum, 6063-T52/T6 alloy, with reinforcing rib bosses.

ROOF: .060" thick (nominal) sheet aluminum removable roof, reinforced with aluminum bracing where required to take a snow load of 40 lbs./sq.ft., plus a required safety factor.

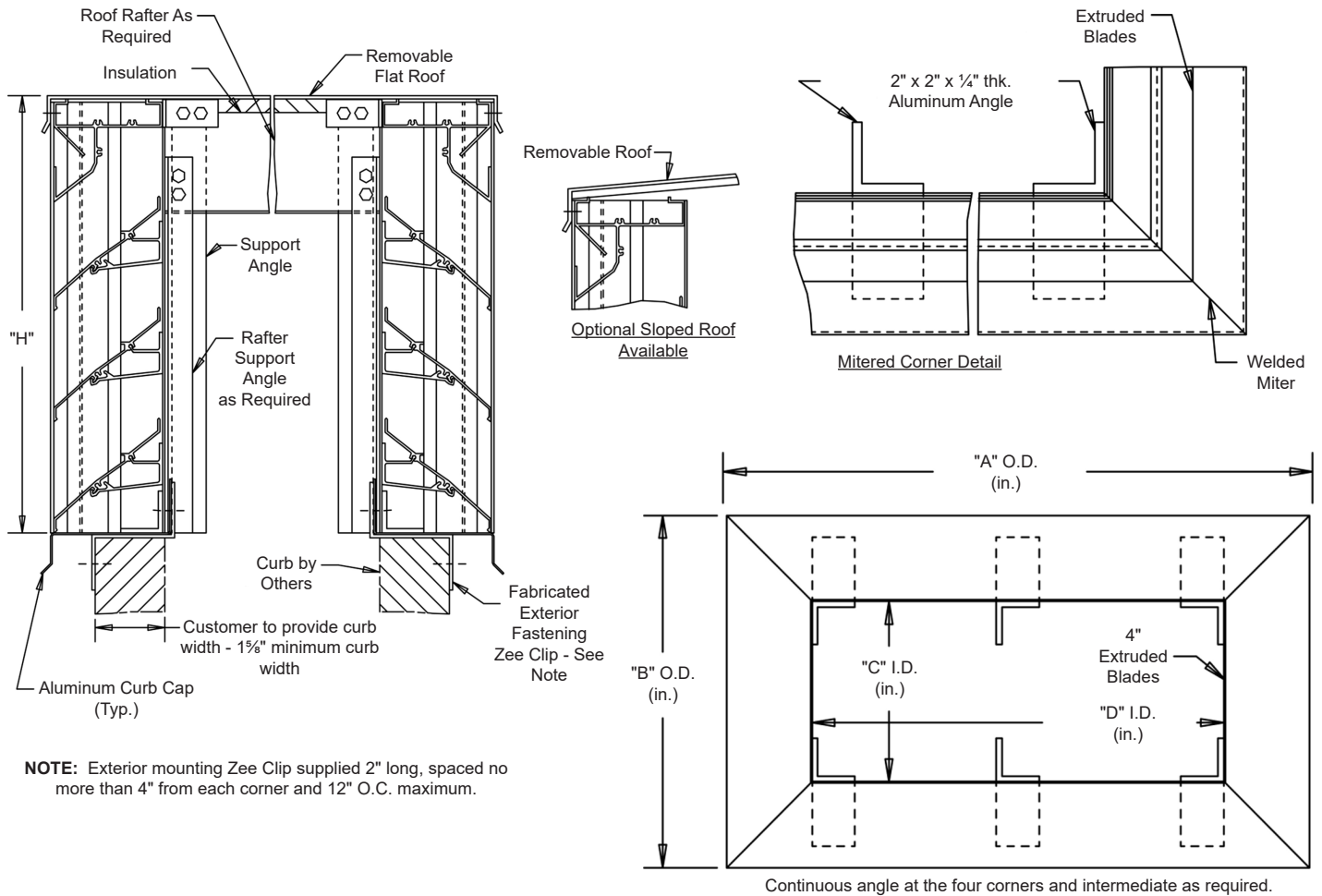
SCREENS: (When indicated)
Bird Screen - 1/2" square mesh, 19 GA. galvanized steel, on interior.

INSULATION: Underside of roof is lined with 1/2" thick insulation.

NOTES: Penthouse dimensions "A" or "B" exceeding 84" shall be shipped in sections for field assembly by others.

												
Item #	Qty	A	B	C	D	H	Mullion	Type	Location	Penthouse Dimensions		
Arch. / Eng. :						EDR:		ECN:		Job:		
Contractor:						Date:		DWN:		DWG:		

Exterior Fastening Installation



NOTE: Exterior mounting Zee Clip supplied 2" long, spaced no more than 4" from each corner and 12" O.C. maximum.

STANDARD MATERIALS AND CONSTRUCTION


MATERIAL: .081" thick (nominal) or .125" thick (nominal) extruded aluminum, 6063-T52/T6 alloy, with reinforcing rib bosses.

ROOF: .060" thick (nominal) sheet aluminum removable roof, reinforced with aluminum bracing where required to take a snow load of 40 lbs./sq.ft., plus a required safety factor.

SCREENS: (When indicated)
Bird Screen - 1/2" square mesh, 19 GA. galvanized steel, on interior.

INSULATION: Underside of roof is lined with 1/2" thick insulation.

NOTES: Penthouse dimensions "A" or "B" exceeding 84" shall be shipped in sections for field assembly by others.

											
Item #	Qty	A	B	C	D	H	Mullion	Type	Location		
Penthouse Dimensions								Screens			Union Made
Arch. / Eng. :						EDR:		ECN:		Job:	
Contractor:								DWN:		DWG:	
Project:											